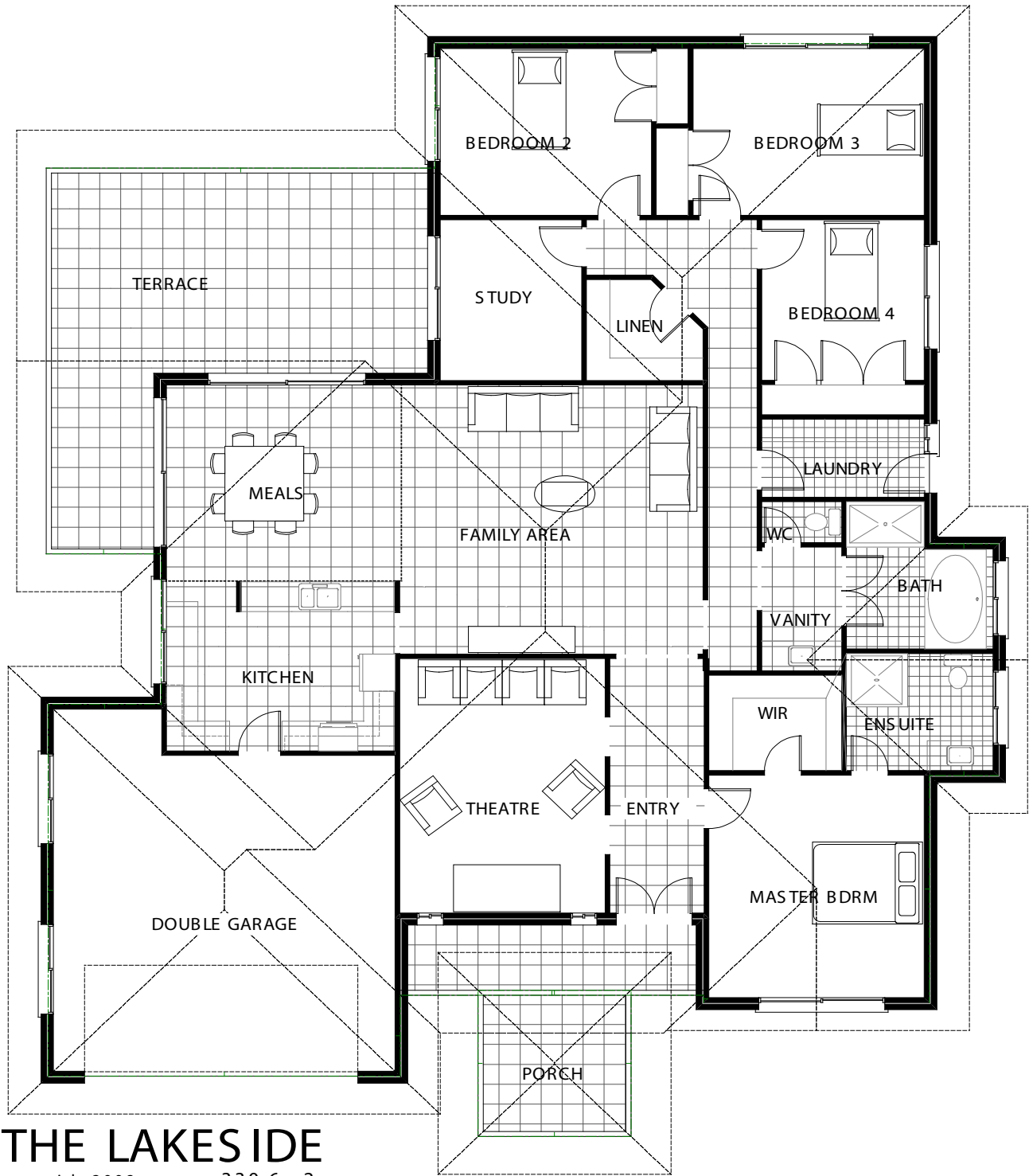


SAMPLE ONLY - NOT TO SCALE



# THE LAKESIDE

copyright 2008

330.6 m<sup>2</sup>



BRUSHWOOD HOMES & CONSTRUCTIONS Pty Ltd trading as

## Crighton Homes Construction

1 Windward Circuit TEA GARDENS NSW 2324

PO Box 149 TEA GARDENS NSW 2324

Builders Lic No. 127690C

ABN 21060 533 520

Phone: 1300 362 579 or (02) 4997 9232 Fax: (02) 4997 9231

Email: [garry@crightonhomes.com.au](mailto:garry@crightonhomes.com.au) [shane@crightonhomes.com.au](mailto:shane@crightonhomes.com.au)

Web: [www.crightonhomes.com.au](http://www.crightonhomes.com.au)